

# LED Emergency Light



## Function:

Emergency Lights are designed to provide Lights on Power Interruption. These Lights have built in

- \* Battery (SMF Type),
- \* Battery charger
- \* Change over circuitry and
- \* Inverter.

Till the mains is ON, the charger stores the energy in the battery. In the event of Power failure, the stored energy is used to light up the tubes.

## Application:

To avoid accident and unwanted situations, these are must for

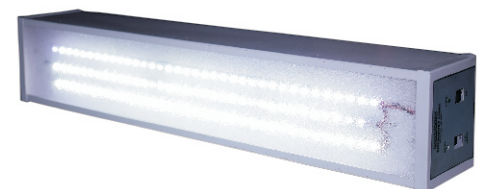
- ! Industries,
- ! Hotels,
- ! Railways Stations,
- ! Air ports Theaters and
- ! all Public Places.

## Specifications:

Parameters		ELD12L	EDT22L	EDT23L
<b>Input</b>				
	Volt	170V.-270 V.		
	Frequency	50 Hz.		
<b>Battery</b>				
	Volt	12	12	12
	A.H.	7.2	7.2	7.2
	Type	SMF		
	Nos.	1	1	1
<b>Illumination</b>				
	LED Colour	White	White	White
	Lux @ 1m	525/300	475	625
<b>Charger</b>				
	Type	Automatic CC/CV		
	Current Max.	1 Amp		
<b>Operation</b>				
		Automatic on mains failure		
<b>Back-up time</b>				
		4-5 Hours (approx.)		
<b>Protections</b>				
	Mains	Glass fuse		
	Battery	Over charging		
<b>Indications-</b>				
	LED	Mains		
		Charging		
<b>Housing</b>				
		Sheet steel powder coated		
<b>Mounting</b>				
		Wall mounting		



ELD-12L



EDT22L



EDT23L

**BAID POWER SERVICES Pvt. Ltd.**

152, Block-B, Lake Town, Kolkata - 700089, West Bengal, India

Tel: +91(033)2521 0322, +91(033)2534 3662, +91(033)4067 8112

Email: info@indiapowerhouse.net, Web: www.indiapowerhouse.com